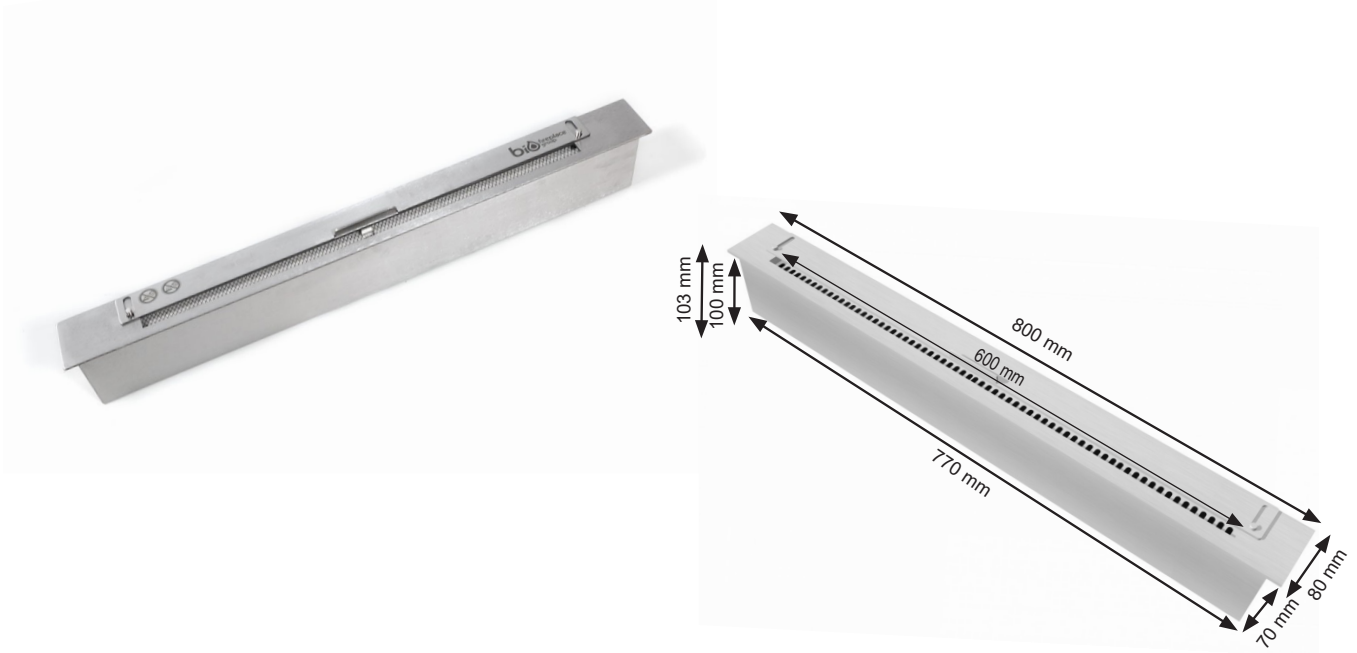




BIO376

Manual Bioethanol Burner



TECHNICAL SPECIFICATIONS

Type	Manual Bioethanol Burner
Size	Outside: Height: 103 mm / Width: 800 mm / Depth: 80 mm Inside: Height: 100 / Width: 770 mm / Depth: 70 mm
Materials	Stainless steel
Weight	Approx. 8 kg
Burner	Adjustable manual bioethanol burner
Capacity	4.0 Liter
Usage	Approx. 0.576 L/hour - Max 7h00m per filling
Fuel	Bioethanol (Recommended 96,6% alcohol)
Colour	Brushed steel
Heat Output	3.50 kW
Electricity	No